

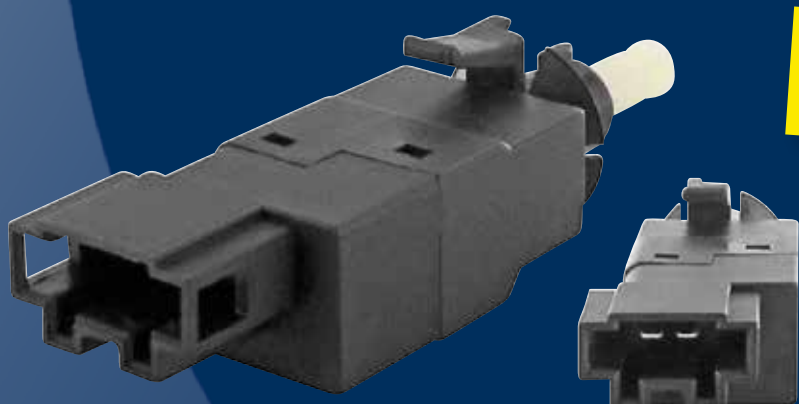
AVAILABLE NOW!

**vNEW**

**VEMO**<sup>®</sup>  
Leading air con & electronic systems

## BRAKE LIGHT SWITCH SUITABLE FOR MERCEDES-BENZ

MERCEDES-BENZ CLS, E-Class



**! NUR BEI VEMO  
ERHÄLTlich!**



autoteile.de/V30-73-0147

OPERATING MODE: MECHANICAL

**X-Ref**

001 545 40 09

**V30-73-0147**



Our new online shop at [www.autoteile.de](http://www.autoteile.de) enables a simplified search. In addition, the shop regularly presents new products, accepts suggestions for kits, encrypts original article numbers and offers exclusive deals which only apply online.

Notes: Limited period of time offers are only valid while stocks last. Subject to prior sales. Our General Conditions of Sale and Delivery and warranty conditions apply, which are available for download on our Website. All prices are net prices. Errors excepted. Reference numbers of vehicle manufacturers are non-binding and no indication of origin. They may not be disclosed in accounts. © VIEROL AG

VEMO\_vNEW\_23201\_V30-73-0147

EN

Quality brand of **VIEROL AG** · Germany

[www.vemo.eu](http://www.vemo.eu)